

## Delegated Decision

07 March 2024

Temporary Traffic Regulation Order

Ordinary Decision/Key Decision No.



---

## Report of NEIGHBOURHOODS AND CLIMATE CHANGE

**Paul Anderson – Strategic Highways Manager, Technical Services**

### Electoral division(s) affected:

Shildon & Dene Valley

### Purpose of the Report

To consider a request for temporary traffic regulation by Order on Monday 15 April 2024 at Unc 42.7 Close House, C129 Gurney Valley, Heslop Street, Stanley Street, Office Row, Pasture Rows, Eldon Bank Rear and South Row Rear/Front Row Rear, Bishop Auckland for the purpose of new Virgin Media telecom infrastructure works.

### Recommendation

It is recommended that the Council exercises its powers under the Road Traffic Regulation Act 1984 to effect a Temporary Traffic Regulation Order to facilitate the proposed works.

### Background

Telecom infrastructure works are proposed to be undertaken.

### Options

Other traffic management arrangements have been considered and the most appropriate method is for temporary road closure.

### Recommendation

The recommendation is approved and that following, consultations with the Chief of Police, arrangements be made to progress the advertising of Public Notices and sealing of an Order.

---

**Contact:** Nicola Longstaff

Tel: 03000 263679

---

---

## **Appendix 1: Implications**

---

### **Legal Implications**

TTRO checked, prepared and advertised via Legal Services

### **Finance**

Costs to be charged to the scheme/applicant.

### **Consultation**

Chief of Police, Local Members, Public Transport Providers (via the Public Transport Team)

### **Equality and Diversity / Public Sector Equality Duty**

N/A

### **Human Rights**

No impact

### **Crime and Disorder**

N/A

### **Climate Change**

N/A

### **Staffing**

Network Management Team

### **Accommodation**

N/A

### **Risk**

N/A

### **Procurement**

Advertising in a public newspaper with costs recharged to the scheme/applicant.



**DETAIL B (B)**

Single/Dual carriageway 40mph or less - 450mm traffic cones, spacing 1.5m.  
 Single/Dual carriageway 50mph or more - 750mm traffic cones, spacing 1.5m.  
 Dual carriageway national speed limit - 750mm traffic cones, spacing 1.5m, relaxation 3m.

Notes:  
 1) During darkness, warning lights to BS EN 12352:2006 should be provided in accordance with Table A1.3 (Appendix 1).  
 2) 45° tapers have 1.5m spacing, no relaxations.  
 3) On motorways and NSL AP duals with hard shoulders, 1m cones will be required for both standard and relaxation works for lead tapers and the facing wall of lane changes.

**DETAIL D (D)**

Single/Dual carriageway 40mph or less - 450mm traffic cones.  
 Single/Dual carriageway 50mph or more - 750mm traffic cones.

Notes:  
 1) During darkness, warning lights to BS EN 12352:2006 should be provided in accordance with Table A1.3 (Appendix 1).  
 2) Detail D applies only to relaxation cases.

	Standard: Normal traffic including buses and HGVs	Restricted: Cars and light vehicles only
Two-way working	6.75 m minimum	5.5 m minimum
Shuttle working	3.25-3.50 m desirable width range	3.25 m desirable minimum width
	3.0 m absolute minimum	2.5 m absolute minimum

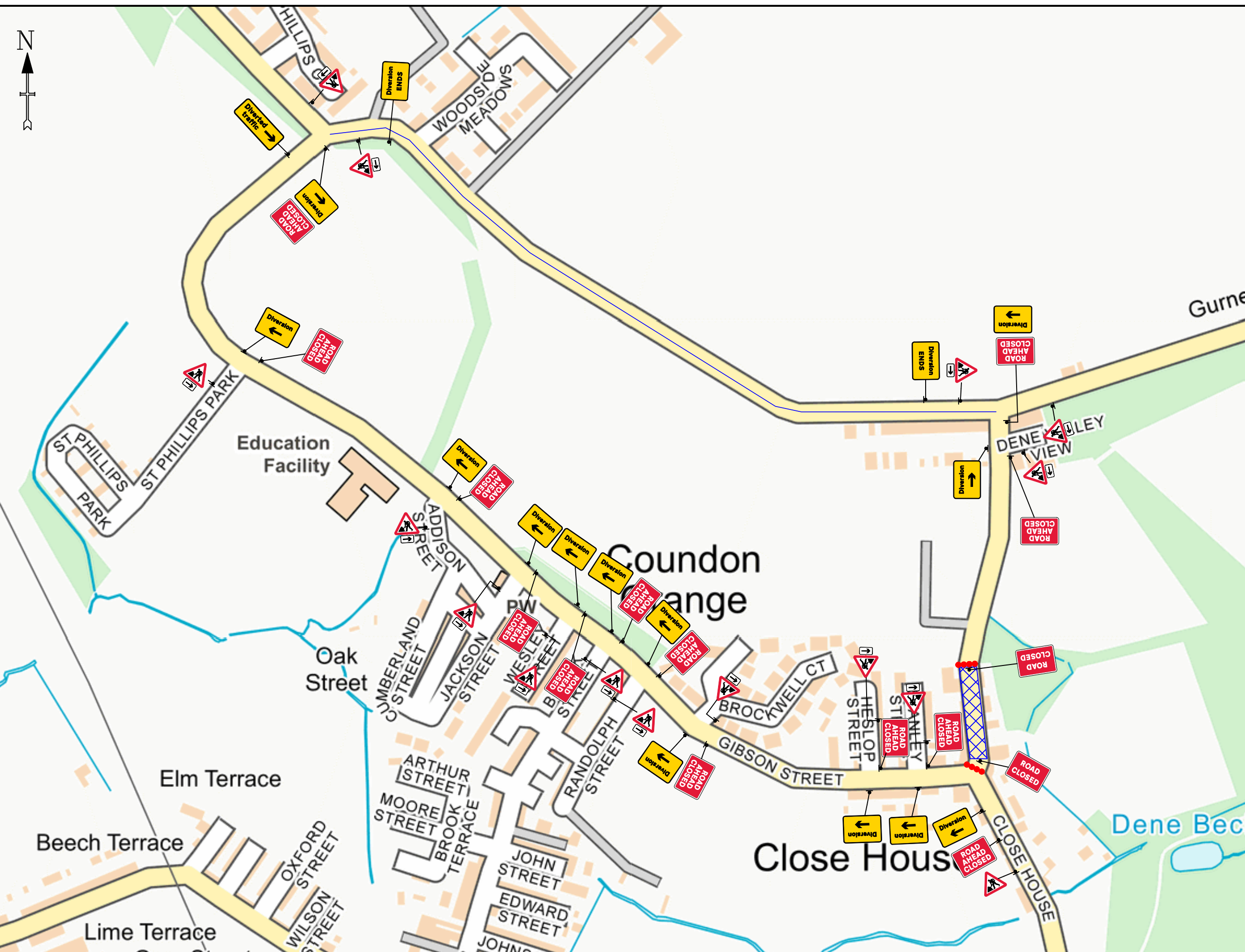
Specials -



Notes -

**KEY**

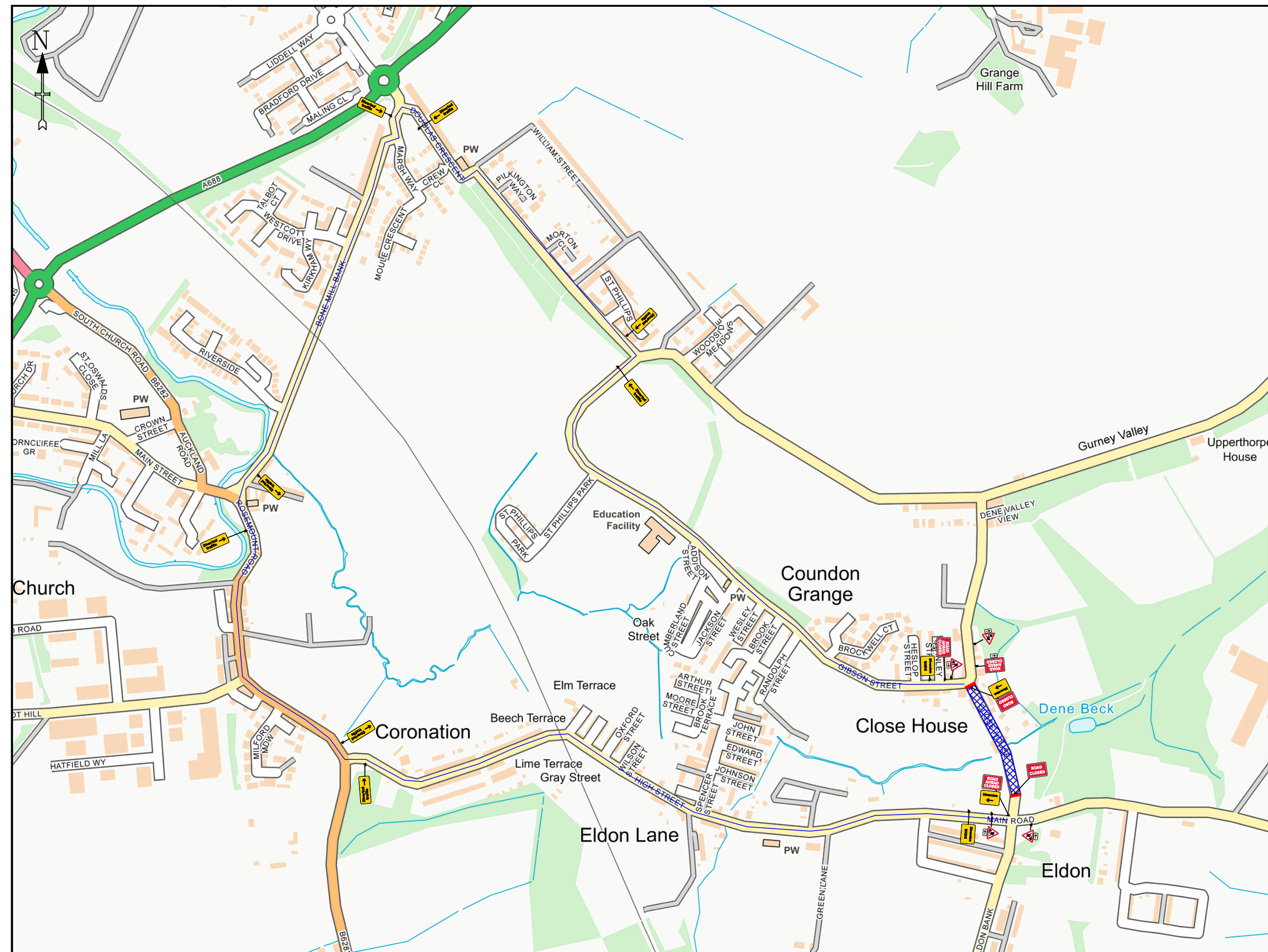
	Traffic sign
	Traffic cone
	Traffic signals to Diagram 3000.1
	Working Space
	Pedestrian Barrier



TEMPORARY TRAFFIC MANAGEMENT 30 MPH		Issue	Date
		1	12/02/24
		Drawn By	JC

ROAD CLOSURE + DIVERSION - PART 7  
 CLOSE HOUSE, BISHOP AUCKLAND  
 DL14 8RR

Original drawing size A3 - NTS  
 Drawing Ref: AVONLINE



**DETAIL B (B)**

Single/Dual carriageway 40mph or less - 450mm traffic cones, spacing 1.5m.  
 Single/Dual carriageway 50mph or more - 750mm traffic cones, spacing 1.5m.  
 Dual carriageway national speed limit - 750mm traffic cones, spacing 1.5m, relaxation 3m.

Notes:  
 1) During darkness, warning lights to BS EN 12352:2006 should be provided in accordance with Table A1.3 (Appendix 1).  
 2) 45° tapers have 1.5m spacing, no relaxations.  
 3) On motorways and NSL AP duals with hard shoulders, 1m cones will be required for both standard and relaxation works for lead tapers and the facing wall of lane changes.

**DETAIL D (D)**

Single/Dual carriageway 40mph or less - 450mm traffic cones.  
 Single/Dual carriageway 50mph or more - 750mm traffic cones.

Notes:  
 1) During darkness, warning lights to BS EN 12352:2006 should be provided in accordance with Table A1.3 (Appendix 1).  
 2) Detail D applies only to relaxation cases.

	Standard: Normal traffic including buses and HGVs	Restricted: Cars and light vehicles only
Two-way working	6.75 m minimum	5.5 m minimum
Shuttle working	3.25-3.50 m desirable width range	3.25 m desirable minimum width
	3.0 m absolute minimum	2.5 m absolute minimum

**Specials -**



**Notes -**

**KEY**

- Traffic sign
- Traffic cone
- Traffic signals to Diagram 3000.1
- Working Space
- Pedestrian Barrier



<b>TEMPORARY TRAFFIC MANAGEMENT</b> 30 MPH	Issue	Date
	1	12/02/24
	Drawn By	JC

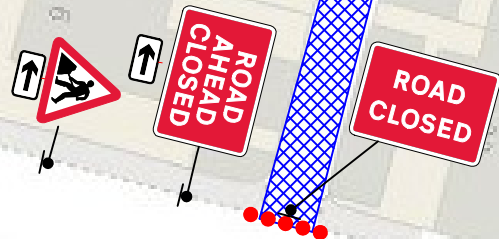
**ROAD CLOSURE + DIVERSION - PART 8**  
**CLOSE HOUSE, BISHOP AUCKLAND**  
 DL14 8RR

Original drawing size A3 - NTS  
 Drawing Ref: **AVONLINE**



110.5m

Eldon Bank



119.7m

**DETAIL B (B)**

Single/Dual carriageway 40mph or less - 450mm traffic cones, spacing 1.5m.  
 Single/Dual carriageway 50mph or more - 750mm traffic cones, spacing 1.5m.  
 Dual carriageway national speed limit - 750mm traffic cones, spacing 1.5m, relaxation 3m.

Notes:  
 1) During darkness, warning lights to BS EN 12352:2006 should be provided in accordance with Table A1.3 (Appendix 1).  
 2) 45° tapers have 1.5m spacing, no relaxations.  
 3) On motorways and NSL/AP duals with hard shoulders, 1m cones will be required for both standard and relaxation works for lead tapers and the facing wall of lane changes.

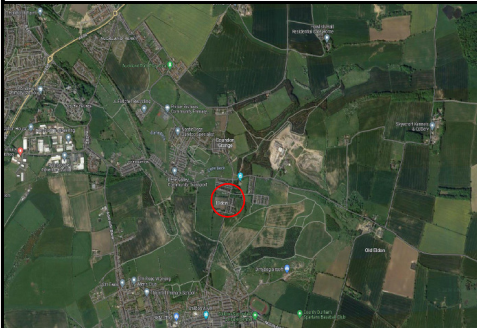
**DETAIL D (D)**

Single/Dual carriageway 40mph or less - 450mm traffic cones.  
 Single/Dual carriageway 50mph or more - 750mm traffic cones.

Notes:  
 1) During darkness, warning lights to BS EN 12352:2006 should be provided in accordance with Table A1.3 (Appendix 1).  
 2) Detail D applies only to relaxation cases.

	Standard: Normal traffic including buses and HGVs	Restricted: Cars and light vehicles only
Two-way working	6.75 m minimum	5.5 m minimum
Shuttle working	3.25-3.50 m desirable width range	3.25 m desirable minimum width
	3.0 m absolute minimum	2.5 m absolute minimum

Specials -



Notes -

**RESIDENTS TO BE PRE WARNED ABOUT RESTRICTED ACCESS / EGRESS WHILE JOB IS IN SITU**

**KEY**

- Traffic sign
- Traffic cone
- Traffic signals to Diagram 3000.1
- Working Space
- Pedestrian Barrier

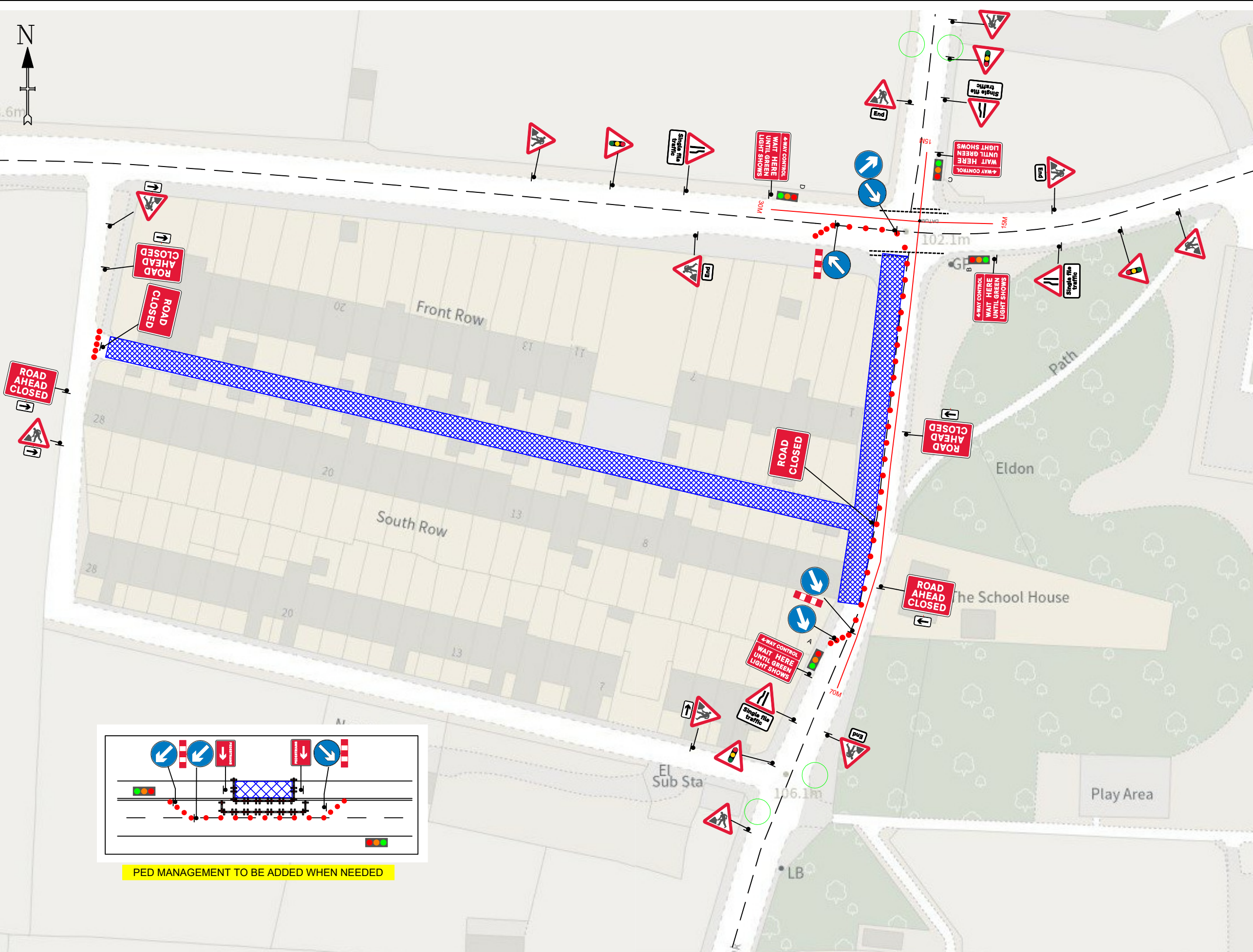


TEMPORARY TRAFFIC MANAGEMENT  
30 MPH

Issue	Date
1	16/02/24
Drawn By	JC

ROAD CLOSURE - PART 10 ELDON BANK CUL DE SAC,  
BISHOP AUCKLAND DL14 8UR

Original drawing size A3 - NTS  
 Drawing Ref: AVONLINE



**DETAIL B (B)**

Single/Dual carriageway 40mph or less - 450mm traffic cones, spacing 1.5m.  
 Single/Dual carriageway 50mph or more - 750mm traffic cones, spacing 1.5m.  
 Dual carriageway national speed limit - 750mm traffic cones, spacing 1.5m, relaxation 3m.

Notes:  
 1) During darkness, warning lights to BS EN 12352:2006 should be provided in accordance with Table A1.3 (Appendix 1).  
 2) 45° tapers have 1.5m spacing, no relaxations.  
 3) On motorways and NSL AP duals with hard shoulders, 1m cones will be required for both standard and relaxation works for lead tapers and the facing wall of lane changes.

**DETAIL D (D)**

Single/Dual carriageway 40mph or less - 450mm traffic cones.  
 Single/Dual carriageway 50mph or more - 750mm traffic cones.

Notes:  
 1) During darkness, warning lights to BS EN 12352:2006 should be provided in accordance with Table A1.3 (Appendix 1).  
 2) Detail D applies only to relaxation cases.

**SAFETY ZONE DIMENSIONS (S)**

Permanent speed limit 30mph or less  
 Sideways safety zone 0.5m  
 Longways safety zone 0.5m  
 (Dimensions are minima)

	Standard: Normal traffic including buses and HGVs	Restricted: Cars and light vehicles only
Two-way working	6.75 m minimum	5.5 m minimum
Shuttle working	3.25-3.50 m desirable width range 3.0 m absolute minimum	3.25 m desirable minimum width 2.5 m absolute minimum

**RED TIMINGS**

HEAD	DISTANCE (TO DATUM)	TIME (SECONDS)
A	70M	12
B	15M	10
C	15M	10
D	30M	12

**GREEN TIMINGS**

HEAD	DISTANCE (TO DATUM)	TIME (SECONDS)
A	70M	25
B	15M	35
C	15M	25
D	30M	35

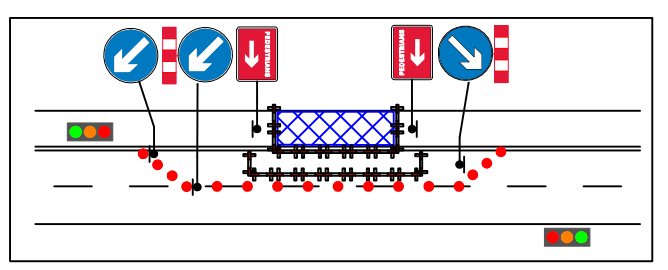


**Notes -**

**BUS STOPS TO BE SUSPENDED AND MOVED TO SUITABLE SAFE LOCATIONS**

**KEY**

- Traffic sign
- Traffic cone
- Traffic signals to Diagram 3000.1
- Working Space
- Pedestrian Barrier

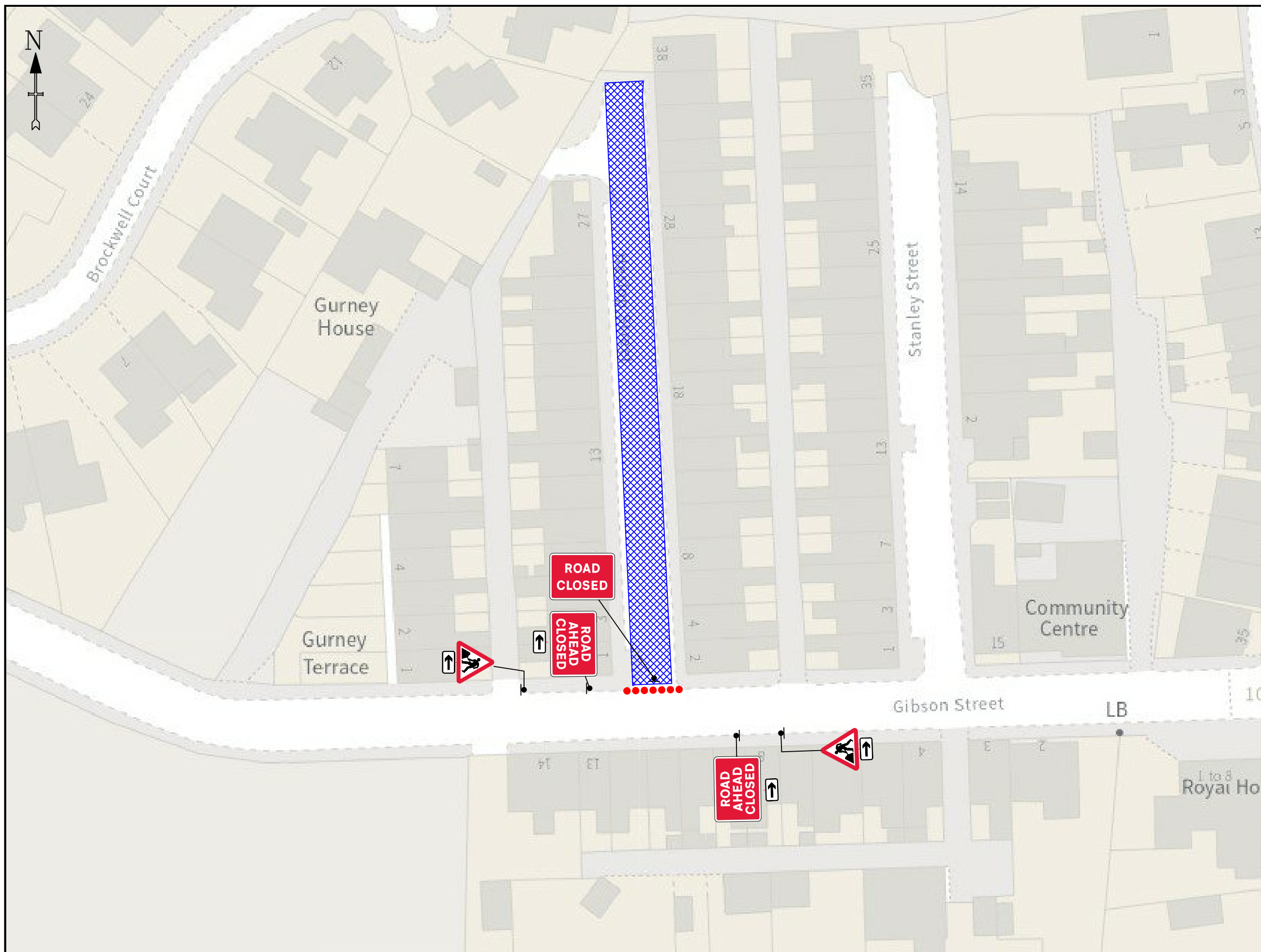


TEMPORARY TRAFFIC MANAGEMENT  
30 MPH

Issue	Date
1	12/02/24
Drawn By	JC

4 WAY TRAFFIC LIGHTS + ROAD CLOSURE - PART 9  
 ELDON BANK, BISHOP AUCKLAND  
 DL14 8UR

Original drawing size A3 - NTS  
 Drawing Ref: AVONLINE



**DETAIL B (B)**

Single/Dual carriageway 40mph or less - 450mm traffic cones, spacing 1.5m.  
 Single/Dual carriageway 50mph or more - 750mm traffic cones, spacing 1.5m.  
 Dual carriageway national speed limit - 750mm traffic cones, spacing 1.5m, relaxation 3m.

Notes:  
 1) During darkness, warning lights to BS EN 12352:2006 should be provided in accordance with Table A1.3 (Appendix 1).  
 2) 45° tapers have 1.5m spacing, no relaxations.  
 3) On motorways and NSL AP duals with hard shoulders, 1m cones will be required for both standard and relaxation works for lead tapers and the facing wall of lane changes.

**DETAIL D (D)**

Single/Dual carriageway 40mph or less - 450mm traffic cones.  
 Single/Dual carriageway 50mph or more - 750mm traffic cones.

Notes:  
 1) During darkness, warning lights to BS EN 12352:2006 should be provided in accordance with Table A1.3 (Appendix 1).  
 2) Detail D applies only to relaxation cases.

	Standard: Normal traffic including buses and HGVs	Restricted: Cars and light vehicles only
Two-way working	6.75 m minimum	5.5 m minimum
Shuttle working	3.25-3.50 m desirable width range	3.25 m desirable minimum width
	3.0 m absolute minimum	2.5 m absolute minimum

Specials -



Notes -

**RESIDENTS TO BE PRE WARNED ABOUT RESTRICTED ACCESS / EGRESS WHILE JOB IS IN SITU**

**KEY**

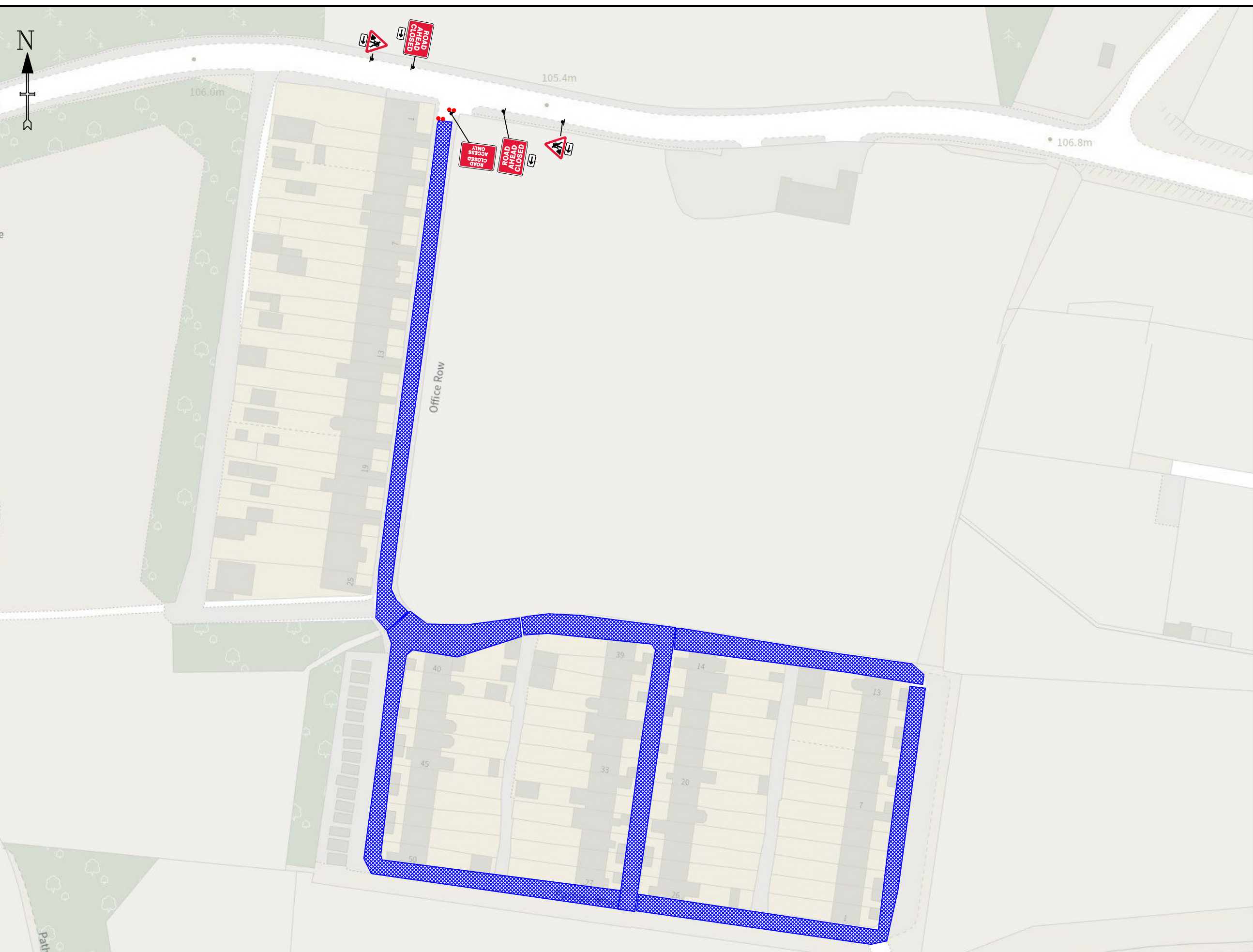
	Traffic sign
	Traffic cone
	Traffic signals to Diagram 3000.1
	Working Space
	Pedestrian Barrier



TEMPORARY TRAFFIC MANAGEMENT 30 MPH		Issue	Date
		1	12/02/24
		Drawn By	JC

ROAD CLOSURE - PART 2  
 HESLOP STREET, BISHOP AUCKLAND  
 DL14 8RU

Original drawing size A3 - NTS  
 Drawing Ref: AVONLINE



**DETAIL B (B)**

Single/Dual carriageway 40mph or less - 450mm traffic cones, spacing 1.5m.  
 Single/Dual carriageway 50mph or more - 750mm traffic cones, spacing 1.5m.  
 Dual carriageway national speed limit - 750mm traffic cones, spacing 1.5m, relaxation 3m.

Notes:  
 1) During darkness, warning lights to BS EN 12352:2006 should be provided in accordance with Table A1.3 (Appendix 1).  
 2) 45° tapers have 1.5m spacing, no relaxations.  
 3) On motorways and NSL AP duals with hard shoulders, 1m cones will be required for both standard and relaxation works for lead tapers and the facing wall of lane changes.

**DETAIL D (D)**

Single/Dual carriageway 40mph or less - 450mm traffic cones.  
 Single/Dual carriageway 50mph or more - 750mm traffic cones.

Notes:  
 1) During darkness, warning lights to BS EN 12352:2006 should be provided in accordance with Table A1.3 (Appendix 1).  
 2) Detail D applies only to relaxation cases.

	Standard: Normal traffic including buses and HGVs	Restricted: Cars and light vehicles only
Two-way working	6.75 m minimum	5.5 m minimum
Shuttle working	3.25-3.50 m desirable width range	3.25 m desirable minimum width
	3.0 m absolute minimum	2.5 m absolute minimum

Specials -



Notes -

**RESIDENTS TO BE PRE WARNED ABOUT RESTRICTED ACCESS / EGRESS WHILE JOB IS IN SITU**

**KEY**

	Traffic sign
	Traffic cone
	Traffic signals to Diagram 3000.1
	Working Space
	Pedestrian Barrier



TEMPORARY TRAFFIC MANAGEMENT 30 MPH		Issue	Date
		1	12/02/24
		Drawn By	JC

ROAD CLOSURE - PART 11  
 PASTURE ROW, BISHOP AUCKLAND  
 DL14 8UZ

Original drawing size A3 - NTS  
 Drawing Ref: AVONLINE





**DETAIL B (B)**

Single/Dual carriageway 40mph or less - 450mm traffic cones, spacing 1.5m.  
 Single/Dual carriageway 50mph or more - 750mm traffic cones, spacing 1.5m.  
 Dual carriageway national speed limit - 750mm traffic cones, spacing 1.5m, relaxation 3m.

Notes:  
 1) During darkness, warning lights to BS EN 12352:2006 should be provided in accordance with Table A1.3 (Appendix 1).  
 2) 45° tapers have 1.5m spacing, no relaxations.  
 3) On motorways and NSL AP duals with hard shoulders, 1m cones will be required for both standard and relaxation works for lead tapers and the facing wall of lane changes.

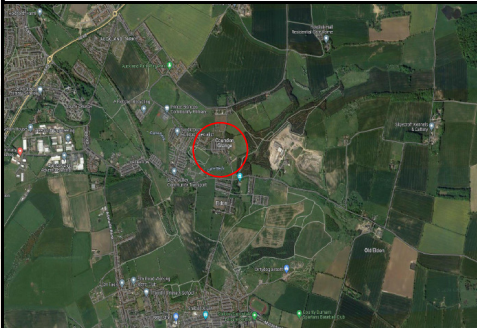
**DETAIL D (D)**

Single/Dual carriageway 40mph or less - 450mm traffic cones.  
 Single/Dual carriageway 50mph or more - 750mm traffic cones.

Notes:  
 1) During darkness, warning lights to BS EN 12352:2006 should be provided in accordance with Table A1.3 (Appendix 1).  
 2) Detail D applies only to relaxation cases.

	Standard: Normal traffic including buses and HGVs	Restricted: Cars and light vehicles only
Two-way working	6.75 m minimum	5.5 m minimum
Shuttle working	3.25-3.50 m desirable width range	3.25 m desirable minimum width
	3.0 m absolute minimum	2.5 m absolute minimum

**Specials -**

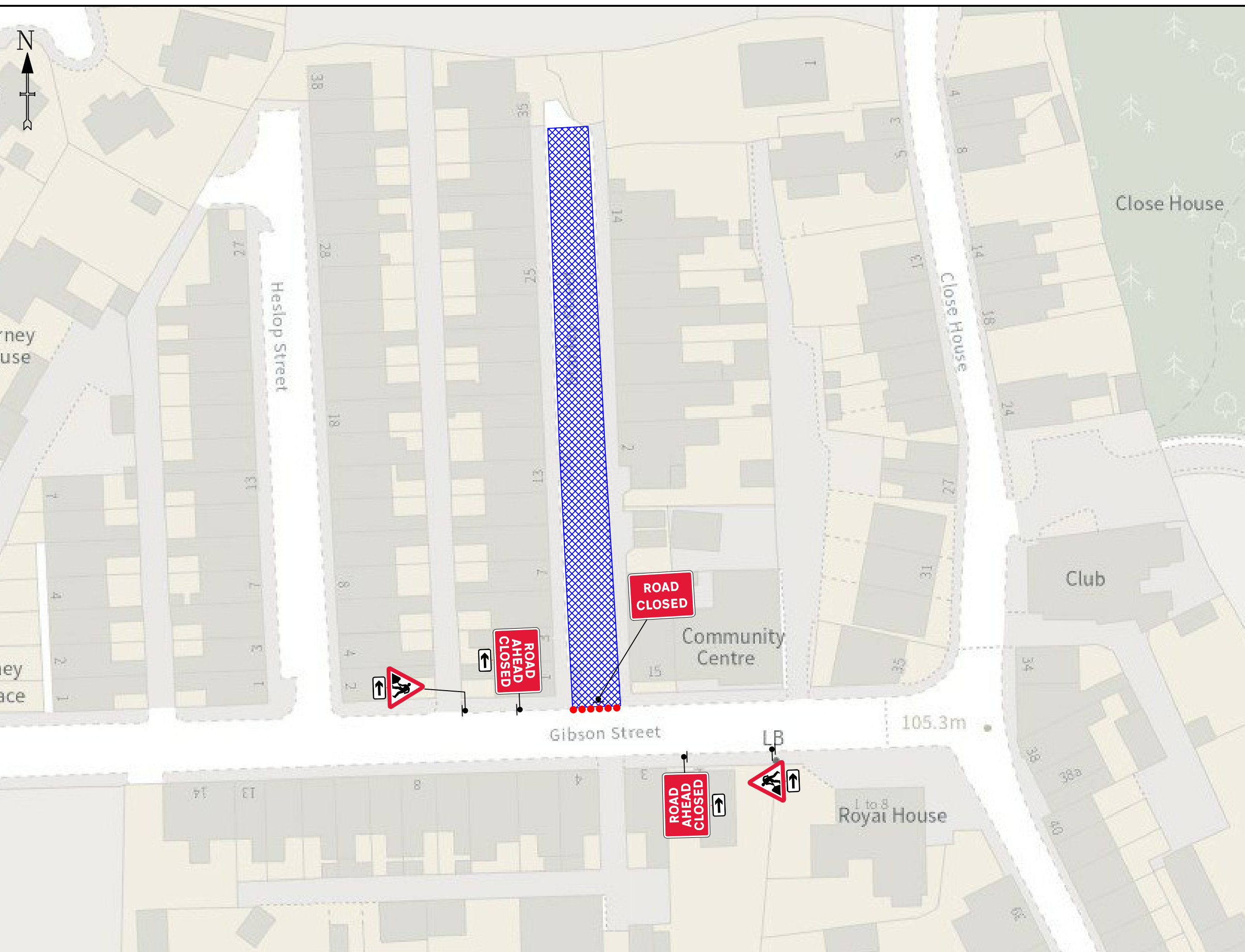


**Notes -**

**RESIDENTS TO BE PRE WARNED ABOUT RESTRICTED ACCESS / EGRESS WHILE JOB IS IN SITU**

**KEY**

- Traffic sign
- Traffic cone
- Traffic signals to Diagram 3000.1
- Working Space
- Pedestrian Barrier



TEMPORARY TRAFFIC MANAGEMENT  
30 MPH

Issue	Date
1	12/02/24
Drawn By	JC

ROAD CLOSURE - PART 3  
 STANLEY STREET, BISHOP AUCKLAND  
 DL14 8RU

Original drawing size A3 - NTS  
 Drawing Ref: AVONLINE